

Hitachi Solutions



SPACE Programme 4.0

Become part of our amazing crew and explore the countless opportunities of the vast Microsoft technologies universe

HITACHI

About us

We, Hitachi Solutions, are a global consulting company with a focus on the implementation of affordable and suitable clients' business applications, based on the Microsoft cloud. It is one of the largest global Microsoft partners. Part of the global Hitachi Group, we have nearly 1000 employees in Europe alone.

Our European branches are in the UK, France, Germany, Portugal, and Bulgaria!

The Bulgarian branch has been established in the autumn of 2019. Since then, we have grown to over 120 people and continue to expand!

Hitachi Solutions was a big moment for me. It helped me feel more sure about my decision to work in tech and gave me confidence in my path.

During the SPACE programme, I learned new tools and improved my communication and teamwork skills. Everything was explained in a clear and practical way, which made learning feel less stressful and more enjoyable.

What really made a difference were the people. The mentors were always ready to help, and my teammates made the journey even more motivating. After the programme, moving to a real project felt exciting as I was ready for new challenges.



Nikolay Stoitsov
Consultant, Technical

What is SPACE programme

Hitachi Solutions Bulgaria launched its SPACE Learning & Development Programme (L&D) in 2023 to inspire the next generation of Hitachi Consultants.

The programme is an exciting opportunity to be part of a company that believes in investing in people for the future and fits perfectly with the Hitachi Solutions vision of growth and our slogan of Inspiring the World. Working with Hitachi Solutions offers a fantastic prospect of being part of a company that thinks ahead. As such, we actively encourage applications from graduates who share our passions.

Hitachi Solutions has an unwavering commitment to the Microsoft ecosystem, encompassing Dynamics 365, Power Platform, Azure, and the broader Microsoft cloud technologies. We think of this programme as not only an investment for Hitachi Solutions, but an investment in Bulgaria, in Europe and in Microsoft's technology.

We have developed a unique selection process that will engage you and identify your strengths to leverage in the future. Those who make it onto the programme are assured of the highest quality training and career opportunities.

In 2026, Hitachi Solutions Bulgaria launched its SPACE Programme 4.0 to inspire and create the next generation of Hitachi Solutions experts!

Start Your Career: SPACE 4.0

The 4th volume of our programme is here, and it's more comprehensive than ever.

Phase 1: The Fundamentals (All Tracks)

Every journey starts with a 2-month intensive training in Microsoft tech stack and core consulting skills. This is the essential DNA for every developer and consultant.

Phase 2: Follow Your Specialisation

Pick your track upon application. Which one is yours?

- **Technical Analyst**
- **Data & Analytics (D&A)**
- **Automation QA**

What will you become?

You will become a SPACE professional:

- S** — Software
- P** — Platform
- A** — Azure
- C** — Consulting
- E** — Experts

Through our Hitachi Solutions Bulgaria's SPACE Programme, you'll be fully prepared to take on consulting roles in Hitachi Solutions Europe's international projects.

From day one, you will gain fast-paced, hands-on experience, working alongside top consultants on some of the largest and most advanced Microsoft technology projects - accelerating your journey from graduate to expert.



What will you get?

- 4 months initial on-site training.
- Theory and practical exercises.
- Mentor support during and after the programme.
- Labour contract with salary from Day 1.
- Hybrid model of work after the initial training, mix of office and home office days based on project assignments.
- International projects.

What will you learn?

Before you specialise, you must master the fundamentals. In this intensive programme, you'll gain the Microsoft Tech Fundamentals - the essential DNA every expert needs to build a world-class career.

Phase 1: The Fundamentals (All Tracks)

Acquire the foundations you need: Azure Cloud; Power Platform & Dynamics 365 CE; Dev Ops; Dev Stack: C#, .NET, JavaScript.

Phase 2: Your Specialisation

Choose your track upon application:

- **Technical Analyst** – full stack development with consultancy focus.
- **Data & Analytics (D&A)** – data engineering & report development.
- **Automation QA** – testing with open-source frameworks (e.g. Selenium).

What do you need to bring?

- Degree or in process of obtaining one (must have already completed your 3rd or 4th student year).
- Fluency in English.
- German and/ or French will be a plus.
- Good communication and interpersonal skills.
- Problem solving and analytical skills.
- Strong sense of responsibility and autonomy.
- Interest in Microsoft-based products.
- Team spirit.
- A passion for technology!

Apply now



Step 1

CV Application and HR interview:



Scan here to apply or visit hitachi-solutions.bg/space

- ☉ E-mail us on contact.bg@hitachisolutions.com
- ☉ Once you apply, our recruitment team will review your application and, if successful, call you for an initial interview.



Step 2

Technical Task - Candidates will be asked to complete a small technical task:

- ☉ You will have up to 5 days to submit it.



Step 3

If your technical task is successful, we will invite you to a technical interview:

- ☉ This is your time to express why you wish to join Hitachi Solutions Bulgaria.



Step 4

Assessment Centre event:

- ☉ If the previous stages are passed successfully, you will be invited to the final stage – the Assessment Centre event.
- ☉ During this interactive two-day event, you'll:
 - Gain an understanding of the company's capabilities, culture and the exciting opportunities within our various tracks.
 - Listen to former participants of the programme as they reflect on their journey, sharing their experiences and growth over the past year.
 - Participate in hands-on activities both individually and in teams, allowing you to demonstrate your skills and collaborate with fellow candidates.
 - Final interview with senior stakeholders.

Recruitment Timeline



What we offer

- A labour contract and salary from Day 1.
- Additional health insurance.
- Monthly food vouchers.
- 25 days annual vacation.
- Volunteering days.
- Hybrid working model (mix of office and home office days based on project assignments) after programme end.
- Modern office with excellent access to transport.
- Drinks & fruit office supply.
- Professional & friendly work environment.
- Company events & teambuilding.
- Opportunity to grow your career and work with international teams.

“

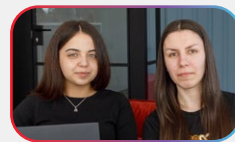
The SPACE programme gave us exactly what we were looking for after university - a strong foundation in data analytics combined with practical experience. Every week we developed new technical skills while also improving how we communicate, present, and work as a team.

We gained hands-on experience working on data preparation, transformation, and visualisation. The highlight was the final case study, where we developed and presented an end-to-end data solution as if working on a real-world project.

Throughout the programme we supported each other and continue to collaborate afterwards.

The transition from training to working in a project environment felt natural because SPACE had already prepared us for it.

Looking back, SPACE didn't just teach us technologies - it gave us the confidence and mindset to grow in the field of data.



**Nadya Chuchuganova
& Stanislava Ivanova**

Data & Analytics Analysts

Hitachi Solutions



SPACE

Contact



For more information you can visit our website
hitachi-solutions.bg/space

Or contact us at
contact.bg@hitachisolutions.com

 Hitachi Solutions Bulgaria

 [hitachisolutionsbulgaria](https://www.instagram.com/hitachisolutionsbulgaria)

 [HitachiSolutionsEUBG](https://www.facebook.com/HitachiSolutionsEUBG)

HITACHI